

## DIGITAL PROSTHESIS



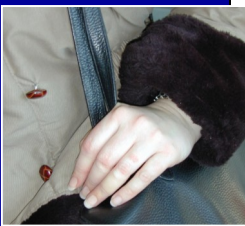
*Digital prostheses fit the stump very well. Their natural anatomical position allows daily activities, both personal and professional, to be performed. With the coloring procedure mentioned earlier the matching of skin tone is so natural that there is almost no need to wear a ring to cover the edge of prosthesis.*

## THUMB PROSTHESIS



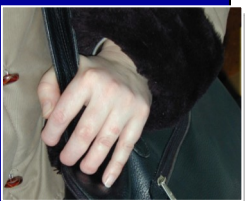
*Proximal amputations of the thumb are difficult to fit and consequently various solutions are devised. When the stump has a minimum length of 1.5cm a good result is easier to achieve. Great care is taken in coloring techniques, which allows the thumb prosthesis to be almost undetectable.*

## SHORT DIGITAL PROSTHESIS



*For long stumps it is possible to make short digital prosthesis, which allows free movement of all remaining joints.*

## MINI DIGITAL PROSTHESES



*This type of prosthesis only covers the tip of the finger and is recommended for amputations where only the pad or the nail is missing.*

# AHP

## EUROPE

*Our commitment is to use our best knowledge  
And expertise to restore a normal appearance  
mutilated limb, either through the use of  
aesthetic prosthesis with passive function  
aesthetically covering functional prostheses.*

*However, the best prosthesis can never replace a body part. It is fundamental that patients have a realistic approach of prosthetic fitting and make their choice based on dispassionate information. Empathy is the key word in approaching amputees. It is only by listening at length to their needs that we can do our best in assessing and fitting*

[www.ahp-europe.com](http://www.ahp-europe.com)

## AHP EUROPE

39 rue Carnot , 94700 Maisons-Alfort  
Tél. : 01 55 96 05 40 - Fax : 01 55 96 05 41  
TVA FR 374 181 692 07 00028  
SARL au capital de 91 469,41 Euros RCS  
Créteil B 418 169 20 7 - SIRET 418 169 207 00028  
CPAM : 94 2 63091 4 - 94 GA 571 - 94 PF 572C

# AHP

## EUROPE

*A principal member of AHP group*

*High tech  
at work  
for  
esthetic  
prosthetics*



*La technique  
de pointe  
au service  
de la prothèse  
esthétique*

# Technology

For this type of prosthesis mass-production is neither available nor possible and their fabrication is the result of a highly qualified handcrafted work, as shown in the enclosed pictures.



# Coloring Procedure



The coloring techniques reproduce the natural color by painting different layers of pigments beneath the outer layer of the prosthesis. The color of the prosthesis cannot change with the changes in the color of the skin, due to variations in blood flow or sun tanning. When living in areas with major seasonal variations it is highly recommended to get two prostheses, one for summer, the other for winter. This also provides a back up in case repairs are needed.

## PARTIAL HAND PROSTHESIS



Improving manual dexterity with the prosthesis, whenever possible, is the objective to be pursued. In partial amputations of the hand, when the thumb or one of the other fingers is left, the prosthesis is designed so that it can be opposed to the palm of the prosthesis.



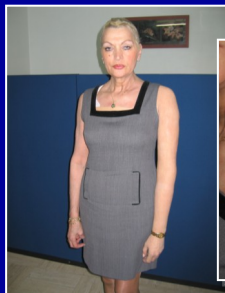
These two criteria, aesthetic and functional, make this kind of prosthesis more difficult to fabricate, but more "natural" in its appearance.

## TOTAL HAND PROSTHESIS



When the amputation is at the wrist level, simple hand prostheses can be made. The silicone material flexibility allows holding light objects. Moreover the limb's normal appearance is restored, which eases socio-professional activities.

## ARM AND FOREARM PROSTHESIS



Fixations are light in weight, do not irritate and, whenever possible, are made supple and flexible material to be as comfortable as possible. The fixation system to the shoulder allows free swinging of the prosthetic arm when walking. The prosthesis can be tightened at the elbow level. The wrist can be rotated, which allows putting the hand in an anatomically correct position when walking or being seated.

## LOWER LIMB PROSTHESIS



For both upper and lower limb prostheses we apply techniques which allow us to find excellent aesthetic solutions, for all types of amputations, as well as to cover standard functional prostheses. (Ex: Myoelectric, voluntary closing devices, etc.)

The goal to be achieved is the balance between aesthetics and comfort in order for the prosthesis to be easily utilized and consequently used in the best possible way.



## FACIAL PROSTHESIS



Through years of research this company has achieved an excellent aesthetic result in facial prostheses. The methods of fixation have evolved and have been simplified to obtain a perfect aesthetic result and make them very easy to apply.



Also our technical use of silicone allows adjusting to all kinds of maxilla-facial mutilations, aesthetically restoring a normal appearance both in volume and color.

